



SCREEN+PLUS[®] INSTALLATION GUIDE



The Screen+Plus Installation Guide

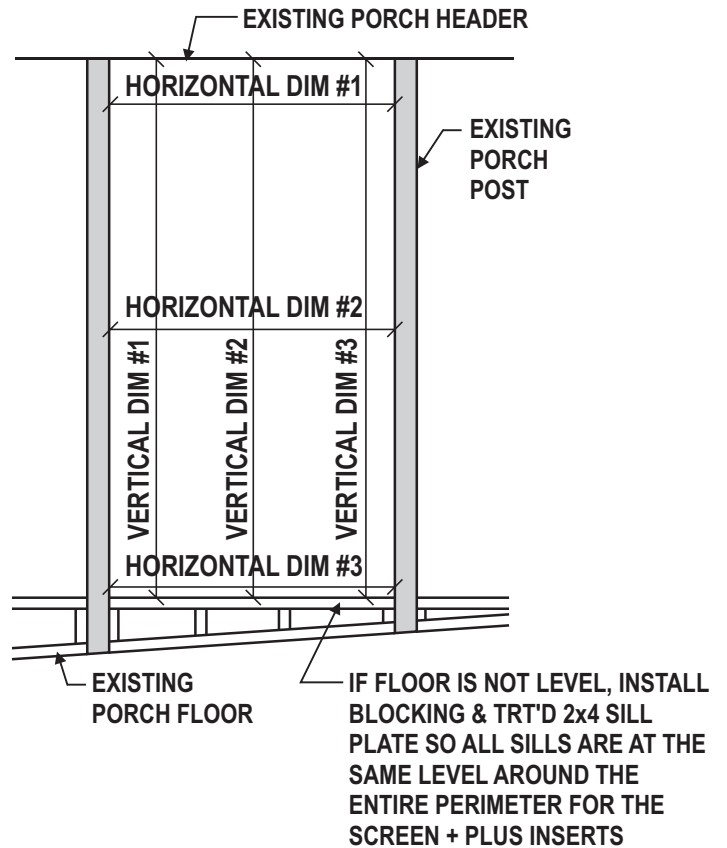
Follow these simple steps to measure and install your Screen+Plus inserts:

- Measure the vertical dimensions and record the shortest dimension.
- Measure the horizontal dimensions and record the shortest dimension.

Note:

Subtract 3/8" from the height and width to determine the Screen+Plus size needed.

If existing posts are more than 3/8" out of plumb they must be straightened.

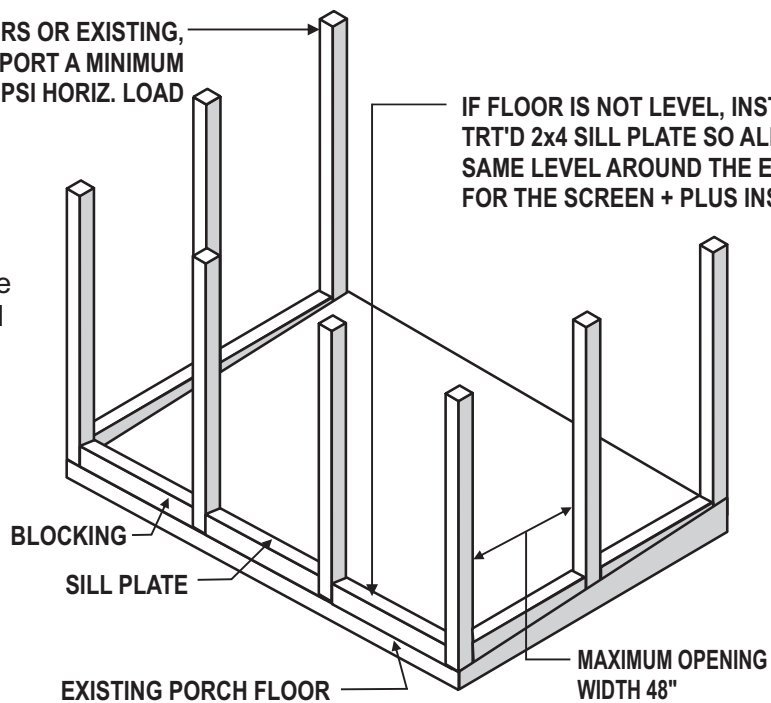


POST BY OTHERS OR EXISTING,
DESIGNED TO SUPPORT A MINIMUM
OF 400 PSI HORIZ. LOAD

IF FLOOR IS NOT LEVEL, INSTALL BLOCKING &
TRT'D 2x4 SILL PLATE SO ALL SILLS ARE AT THE
SAME LEVEL AROUND THE ENTIRE PERIMETER
FOR THE SCREEN + PLUS INSERTS

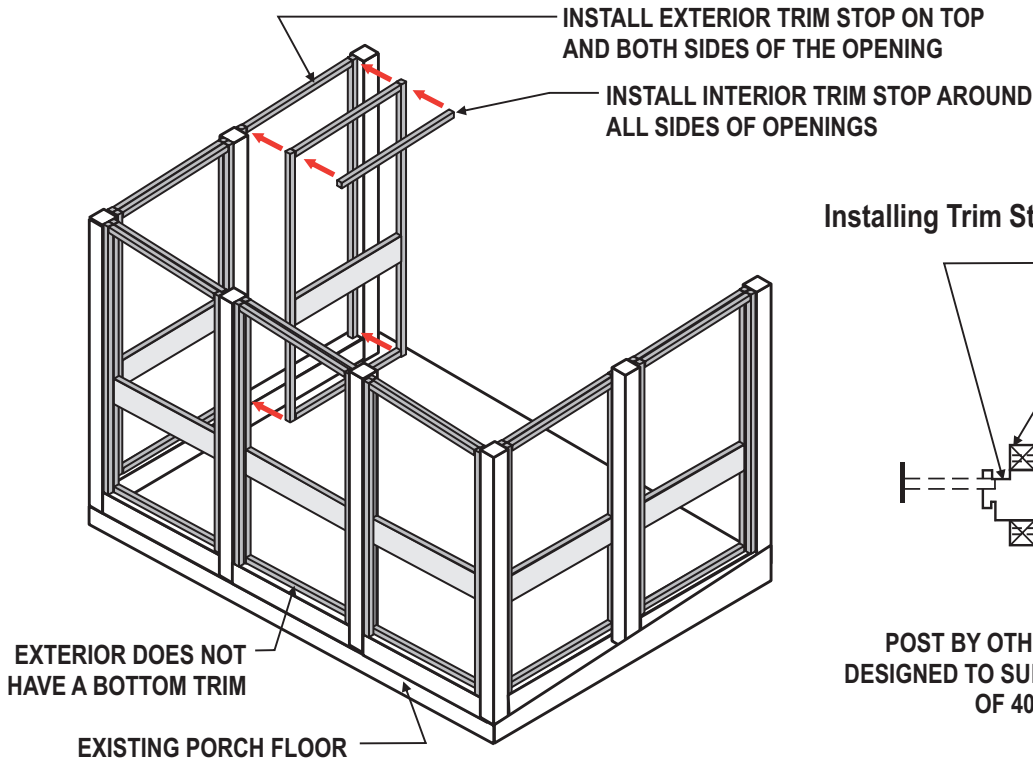
Note:

All sill plates must be at the same level so that the screen + plus inserts and cross rails align when installed.

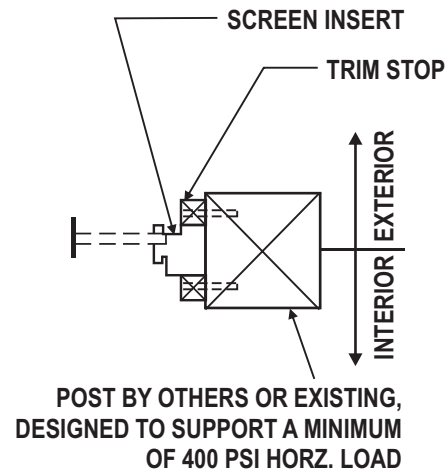




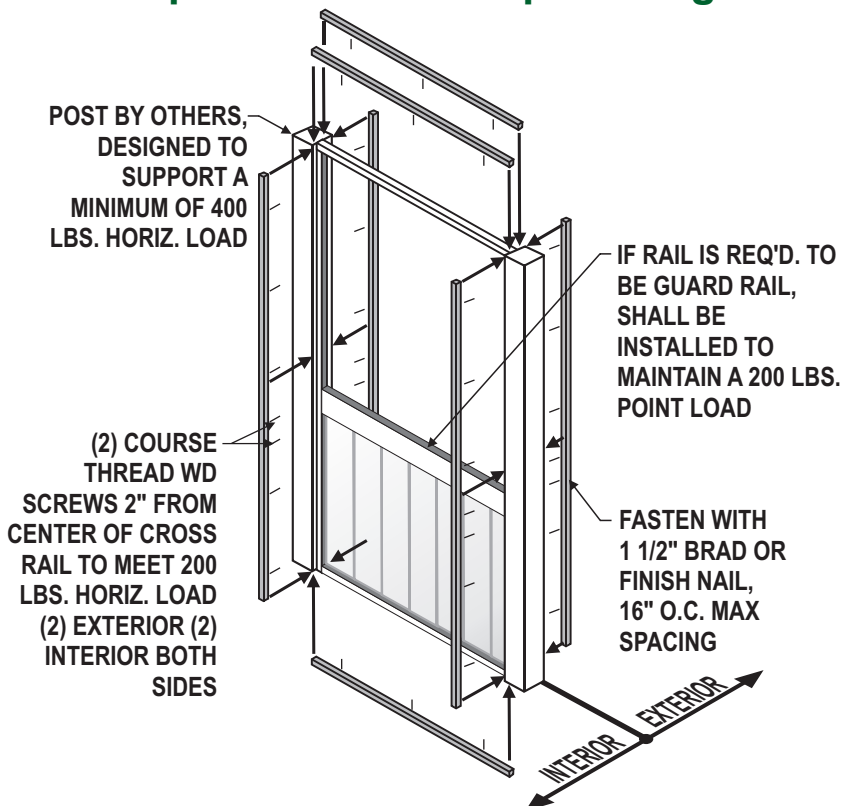
Installing Trim Stops



Installing Trim Stops Section:



Description of Trim Stop Package



The trim stop package consists of $\frac{3}{4}$ " x $\frac{3}{4}$ " square trim.

Inserts are held in place by being installed between the exterior and interior trim.

Screen+Plus inserts should not be attached to posts but allowed to "float" between trim stops. They are supplied long for final cutting by the installer to ensure a tight fit. Total of seven pieces supplied for each insert, three for the exterior and four for the interior.

Do not install trim at bottom on exterior as it could trap water.